



Greece



Climate-KIC is supported by the EIT, a body of the European Union

www.climate-kic.org/countries/greece/

Prof. Phoebe Koundouri

Director Climate KIC Greece, ATHENA Research & Innovation Center

Professor and Director of ReSEES Laboratory, School of Economics
ATHENS UNIVERSITY OF ECONOMIC AND BUSINESS

Research Professor, CCCEP, LONDON SCHOOL OF ECONOMICS

Co-Chair, UN SDSN: UN Sustainable Development Solutions Network - Greece

Chair ICRE8: International Center for Research on the Environment and the Economy

Vice-Chair, European Forest Institute



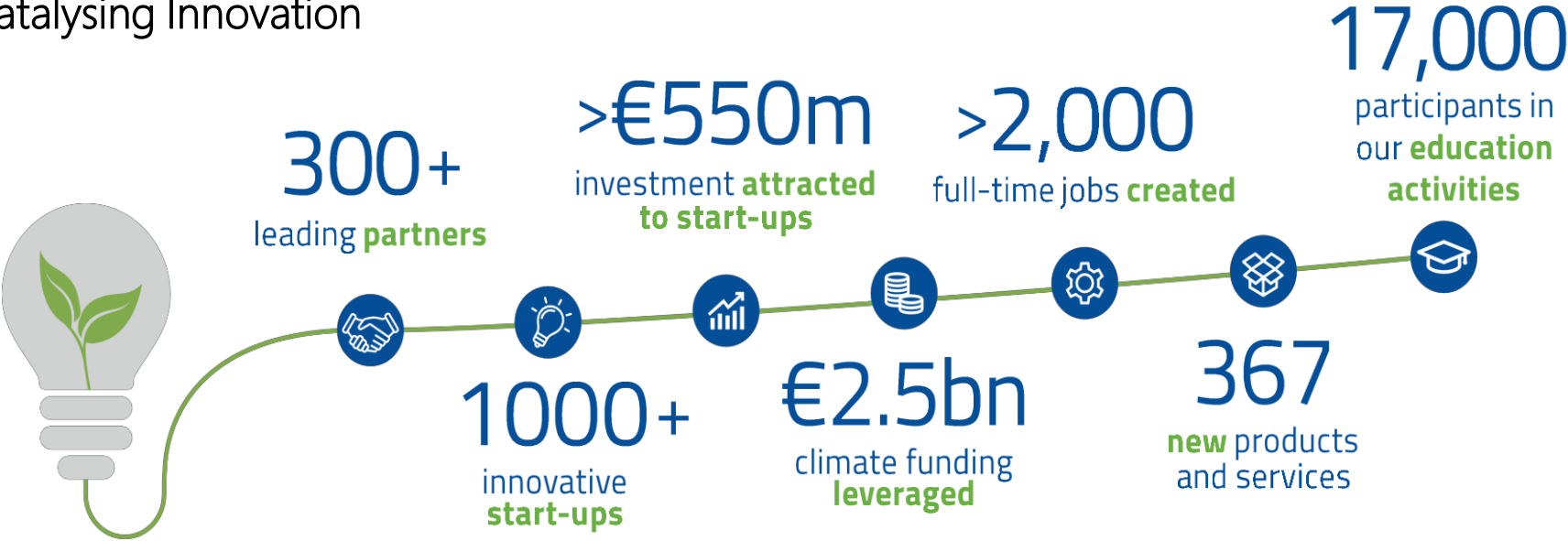
Climate-KIC

EIT Climate-KIC is a European **knowledge and innovation community** working to accelerate the transition to a **zero-carbon economy** through **whole systems** transformation.

EIT Climate-KIC is part of the European Institute of Innovation and Technology (EIT) and the EIT community. The EIT is a body of the European Union. We are one of six KICs acting together as global innovation leaders, delivering world class solutions to societal challenges.

Building a movement of climate action

- Convening networks of expertise
- Leveraging Grants Smartly & Effectively
- Developing People & Capacity
- Catalysing Innovation





Climate-KIC

Greece

Transforming innovation into climate action



ATHENA

Research & Innovation
Information Technologies

ACADEMY OF ATHENS



HELLENIC REPUBLIC
MINISTRY OF ENVIRONMENT AND ENERGY
GREEN FUND



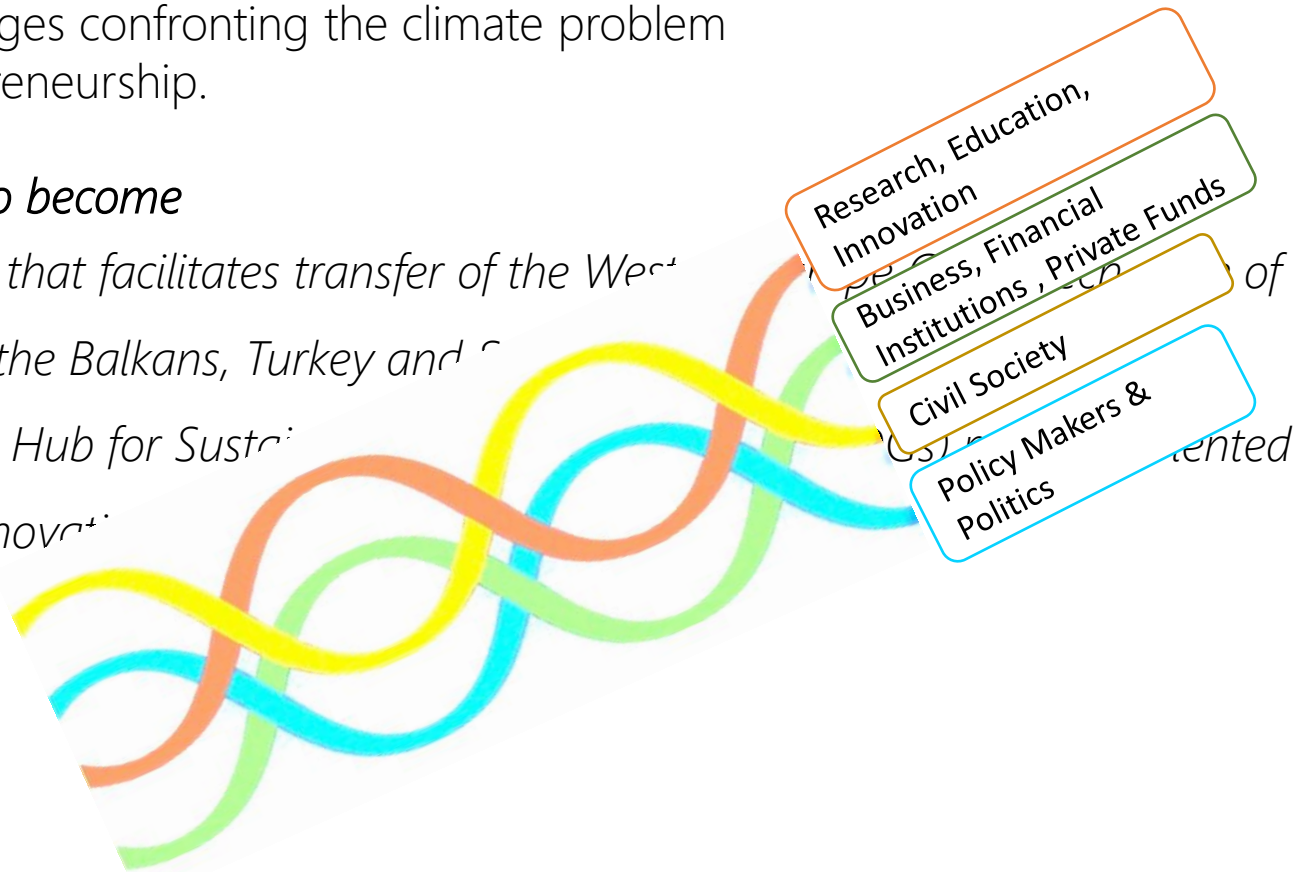
Mission Statement: The Greek EIT Climate KIC Hub

To mobilize global and national scientific and technological expertise, to accelerate the transition to zero carbon economy, through:

- Clean Tech Innovation
- Integrated Approach addressing economic, social and environmental challenges confronting the climate problem
- Entrepreneurship.

VISION: To become

- *A bridge that facilitates transfer of the West*
- the art to the Balkans, Turkey and*
- *Regional Hub for Sustainable*
- climate innovation*



How?

1

Convening networks of expertise

Partners from business, academia, and the public and non-profit sectors, to create networks of expertise, through which innovative products, services and systems can be developed, brought to market and scaled-up for impact.

2

Leveraging Grants Smartly & Effectively

Identify and place public and private funds that stimulate innovation. Funding partners can effectively invest their resources for maximum impact.

3

Developing People & Capacity

Education programs (including online) for students, postgraduates and professionals., to develop skills and capacities, empowering them with up-to-date knowledge and best practice, and most of all Inspire them!.

4

Catalysing Innovation

Catalyze and nurture innovation, from large corporations, research institutes and public bodies, through to start-ups and individual entrepreneurs.

Motivation

To replicate in the **Climate Sector**, the most successful example of technology transfer in Greece



INNOETICS, an ATHENA RIC's spin-off, acquired by Samsung at the highest exit value of a Greek academic and research spin-off

Expected Impact for Greece

1

Promote innovative CleanTech Companies & Initiatives towards the **reduction of lignite** production

2

Promote **decentralized energy production**. Innovative Energy Startups can join schemes along with municipalities and citizens (PPPP), towards ending Energy Poverty.

3

Facilitate the Ministry of Environment & Energy to achieve their targets for a **low carbon economy** until 2030

4

Provide **policy guidance** to Ministries for the sustainable growth of Green Entrepreneurship

5

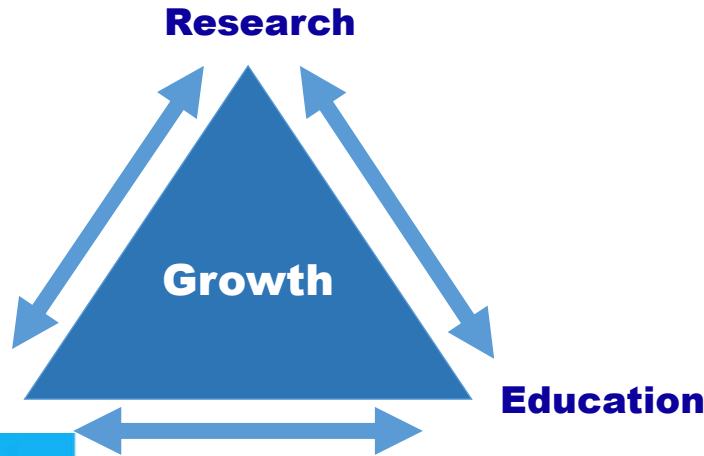
Affect the Regional Operational Programmes (**ROPs**) through concrete suggestions to Regional **Smart Specialization Strategies** for Climate Change Adaptation, Mitigation & CleanTech Entrepreneurship

6

Revert Brain drain effect that resulted to the migration of 427.000 Greeks that produced 16 € Billion for other countries.

THE PARTNERS

Operates under the auspices of the **General Secretariat for Research & Technology** -
Ministry of Education and Research / Issuer of {S3}



500+ Projects

International, European,
Regional, National

€ 65+ Million

Raised from EU Funding including
climate related projects (Capsella,
Globaqua, Bluebridge etc)



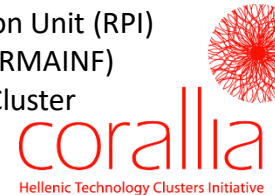
Key Collaborations

3 Institutes



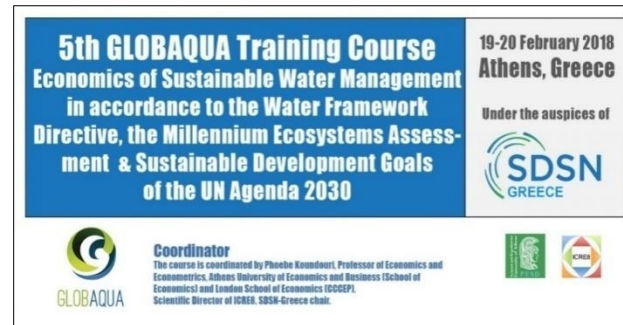
5 Units

- **Environmental** and Networking Technologies and Applications Unit (ENTA)
- **Space** Programmes Unit (SPU)
- **Robot** Perception and Interaction Unit (RPI)
- **Pharma** - Informatics Unit (PHARMAINF)
- Corallia | Hellenic **Technology** Cluster Initiative



Each Year ATHENA RIC organizes various (100+) Types of HACKATHONS, Competitions, Training & Education Courses, Workshops, Conferences.

ATHENA's Corallia (Cluster of Clusters, 40+ companies) in cooperation with Eurobank, operates **egg**, the most prominent accelerator in Greece with **6** incubation cycles so far





5th GLOBAQUA Training Course
Economics of Sustainable Water Management
in accordance to the Water Framework
Directive, the Millennium Ecosystems Assessment & Sustainable Development Goals
of the UN Agenda 2030

19-20 February 2018
Athens, Greece

Under the auspices of
SDSN
GREECE

Coordinator
The course is coordinated by Phoebe Koundouri, Professor of Economics and Econometrics, Athens University of Economics and Business (School of Economics) and London School of Economics (LSE) (School of Economic Studies), Scientific Director of ICREA, SDSN-Greece chair.



Join the RDA-Europe / BlueBRIDGE
Datathon on
Fisheries and Aquaculture
June 15-16, 2017 – Heraklion, Crete, Greece

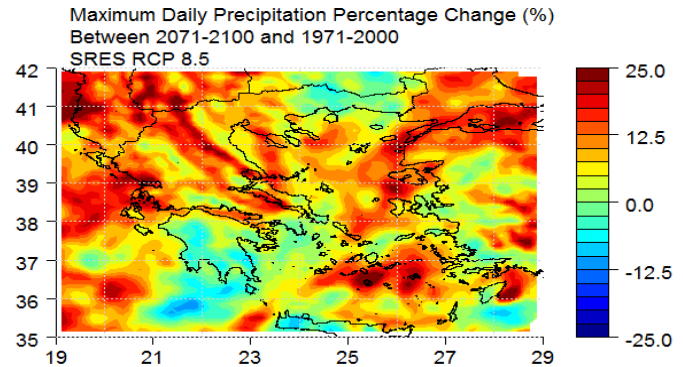



**European Association
of Environmental and
Resource Economists**

E A E R E

Every year, INSPEAR contest gives researchers the opportunity to bring their ideas to life

- Research on global and local climate processes through both observational analyses from satellite and surface platforms.
- Climate modelling studies.
- Operates the **Navarino Environmental Observatory (NEO)**, dedicated to the study of climate change and its environmental and human impacts in the Mediterranean.



Studies under different **Emission Scenarios**: e.g. SRES A1B, RCP 4.5
Studies of **indices** related with: Floods, Droughts, Fire Risk, Bio-indices and Tourism





Co-operates with Bank of Greece in analyzing:

- **Socio-economic** effects of manmade climate change in Greece
- **Macro-Micro Level**
- **Climate Finance:** Socio-Economic and Financial Instruments for Climate Change adaptation and Mitigation

Academy of Athens & Bank of Greece play a vital role in **Policy Making** by proving suggestions in legislation to corresponding Ministries

Co-organizing **events and seminars** on state-of-the-art climate models (for Greece and the wider eastern Mediterranean area) and related adaptation and mitigation strategies

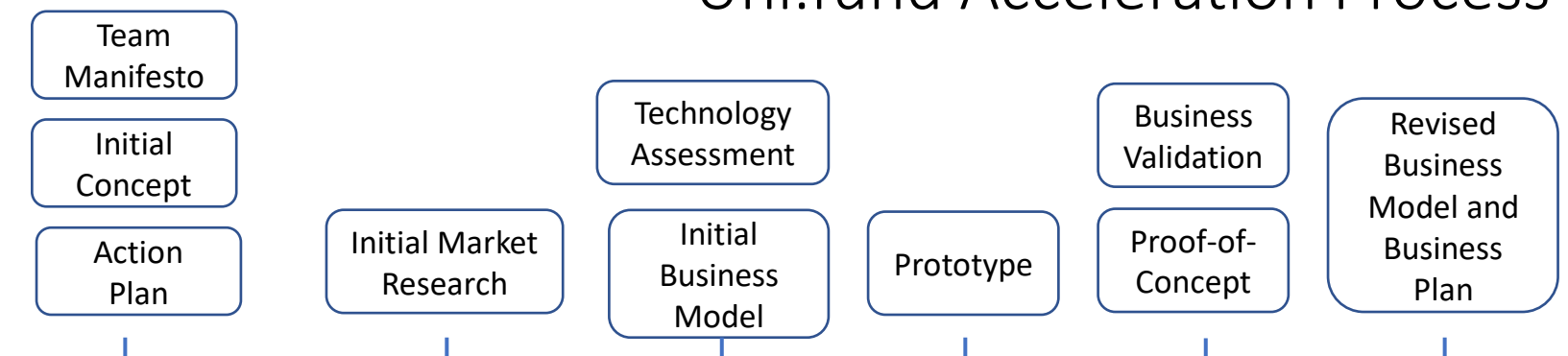
Uni.fund is a Tech Transfer and Acceleration Fund, investing in start-ups and spin-offs at pre-seed and seed stage

It focuses on ICT and the broader tech space, including energy, materials and the environmental sector

Supports virtual incubation, open innovation and acceleration activities, towards the funding stage

Uni.fund's Vision is to promote entrepreneurship & leverage the hidden potential of Greek Universities and Research Centers

Uni.fund Acceleration Process



Investment Strategy

Pre-Seed

Follow-on

Direct Seed Cases

200-300.000€

1.000.000€

1.500.000€

with or no
milestones

Hands-on support to portfolio companies



Tech Transfer

IP Management &
Legal Advice

Venture Development & Scaling

Strategic Advice
and Services

Team Building / Recruiting

Branding and Digital Marketing

Go-to-market strategy and global
expansion

Global Networking & Exit

Global Networking

Financing / Licensing /
Exit Transactions



European Regional Framework for Co-operation

Focus Areas

- EU Integration
- Territorial cooperation
- Regional Development
- Social Innovation
- Energy Cooperatives
- Climate Mitigation

ERFC will allocate 1 human resource for day-to-day operations and its members in planned events & activities.



ERFC will co-organize various types of events (including Hackathons & Pitching Events in front of investors, Hellenic VC, Business Angels) based on past experience, focusing in the cross-border areas.



Mobilization of stakeholders originating from youth & civil society to participate in hub's activities

"Innovation Investment Forum"
 Organized by: ERFC – European Regional Framework for Cooperation - Greece (www.ercf.gr), Atlantis Consulting SA – Greece (www.atlantisresearch.gr)
 in the frame of IPA ADRIATIC STRATEGIC PROJECT: Smart Inno (www.smartinno.eu)
 Date: 24 -25 September 2015
 Venue: Conference Hall of Corfu Port Authority, Corfu, GREECE

Supporting Organizations & Projects

MED HACKATHON

ERFC

CEID



ERFC via its close collaboration with European Crowdfunding Network will make crowdfunding campaigns



Expertise in accessing European funds



€ 3+ Million
Raised from EU funds



250+
Project Partners

35+ years
Working Experience in EU
Projects in EC, DG Regio, Large
companies in Brussels, Greek
Regions & Universities



10.000+
Contacts in our database
from various projects

ERFC has participated in projects from various EU Calls including:

EuropeAid	H2020	Interreg Med
Interreg Europe	FP7	ENPI CBC Med
DG Justice	Black Sea CBC	IPA Adriatic
South East Europe (SEE)	Erasmus+	Interreg Greece – FYROM
Interreg Greece – Italy	IPA Greece – Albania	LLP DG Education & Culture





Thematic Priorities

The Value of Nature and Sustainable Investment Allocation

Climate Change: Mitigation and Adaptation Policies

Sustainable Development in Times of Crisis

Focus Areas

- Sustainable Shipping and Marine Resources
- Sustainable Energy and Energy Security
- Sustainable Water-Food-Energy Nexus
- Sustainable Tourism and Biodiversity
- Education and Training Courses in Sustainable Development



SDSN Greece has a broad network of **3000+** collaborating **universities** & research institutions over the world and **350+ companies** in Greece that will mobilize for the EIT Climate KIC Hub's activities

SDSN Greece postgraduate program on Climate Change and Sustainable Development in collaboration with Earth Institute, Columbia University + Industrial PhD



Active participation in SDG Academy, a virtual platform that provides high-quality, mass online education in the field of sustainable development. 1 million students enrolled by 2020

Supporter of SDSN Global initiatives: Paris Agreement on Climate Change, Deep Decarbonization Pathways & Low-Carbon Technology Partnerships Initiative

Member of the Solutions network and regular participant at the annual New York Climate Change Week

Events: Sustainability Summit for SE Europe and the Mediterranean (The Economist and Uni of Cambridge)

SDSN-Global Director,
Prof. Jeffrey Sachs
Columbia University

SDSN GREECE Map Projects



- €100+ million of research funding from: European Commission (DG RTD, DG MARE, DG ENV, DG ENER, DG Regio) International Organizations (World Bank, OECD, EBRD, WHO, FAO, UN), Governments in all 5 continents
- 1000+ peer-reviewed research papers & books



Foundation for Economic and Industrial Research (IOBE)

3500+ Corporations

The Founding member *Hellenic Federation of Enterprises (SEV)* is **Biggest Enterprise Association** in Greece. IOBE will mobilize its network for attracting funds through CSR Departments

48% Greek Corporate Income

is represented through SEV members that come from all sectors with **59** branch and regional associations

Together at Start!

Strategic Initiative focusing on **technology transfer** of young scientists

Policy Intervention

Shaping **decision** and **policies** at National Level in collaboration with corresponding Ministries. Formulating Hub's focus areas.



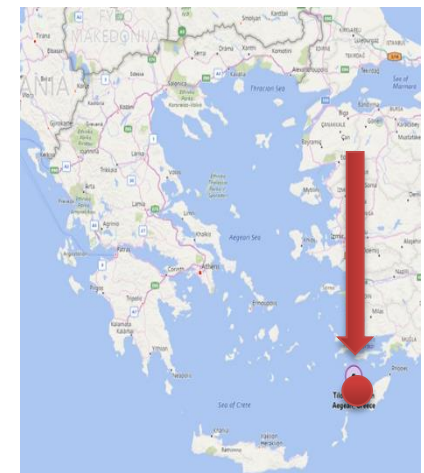
Incubator in collaboration with **City of Athens**

Press

Strong Presence in National & International Media (TV, Radio, Newspapers, Social Media)

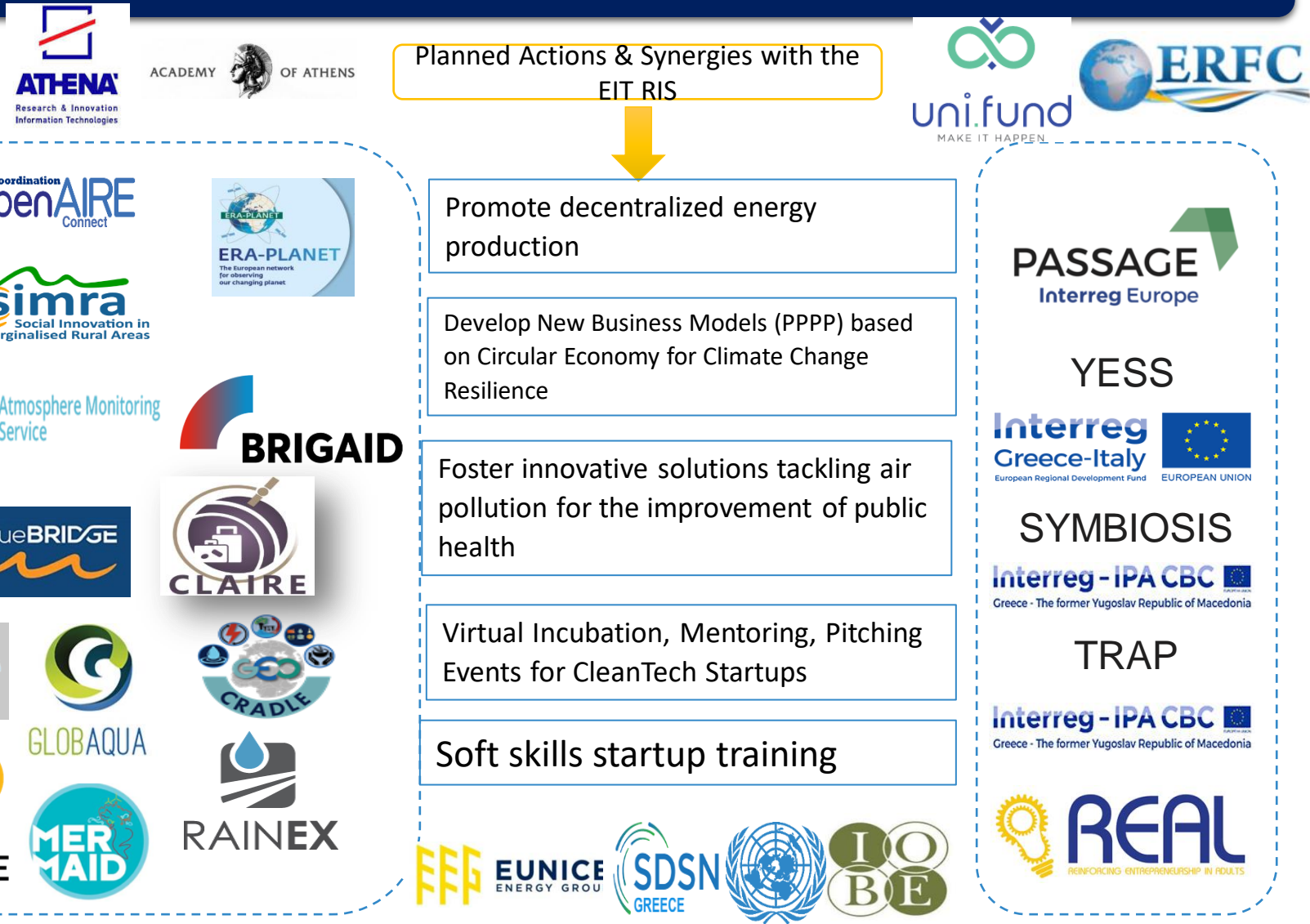


- Track record of installed capacity of **+60 MW** of Wind & Photovoltaic Stations
- Plans to install additional **+20 MW** of wind power
- Will act as a **testing ground for CleanTech Startups in RES**
- Will **focus** on replicable & innovative solutions in **Greek Islands** with the participation of Cleantech Startups, and provide demo sites for the Climate KIC Innovations
- Technology transfer from TILOS Island project to other Aegean islands, South and East MED countries (currently exploring potential in Morocco)
- Has **committed to support financially** the consortium via an MoU



Synergies with ongoing EU Projects funding instruments

The consortium will link with ongoing and recent FP7, H2020, PRIMA, Interregional ERDF, LIFE, etc. projects by co-funding joint actions



The consortium will work together for the participation of the Greek EIT Climate KIC hub in various EU Calls

Synergies with ongoing EU Projects funding instruments

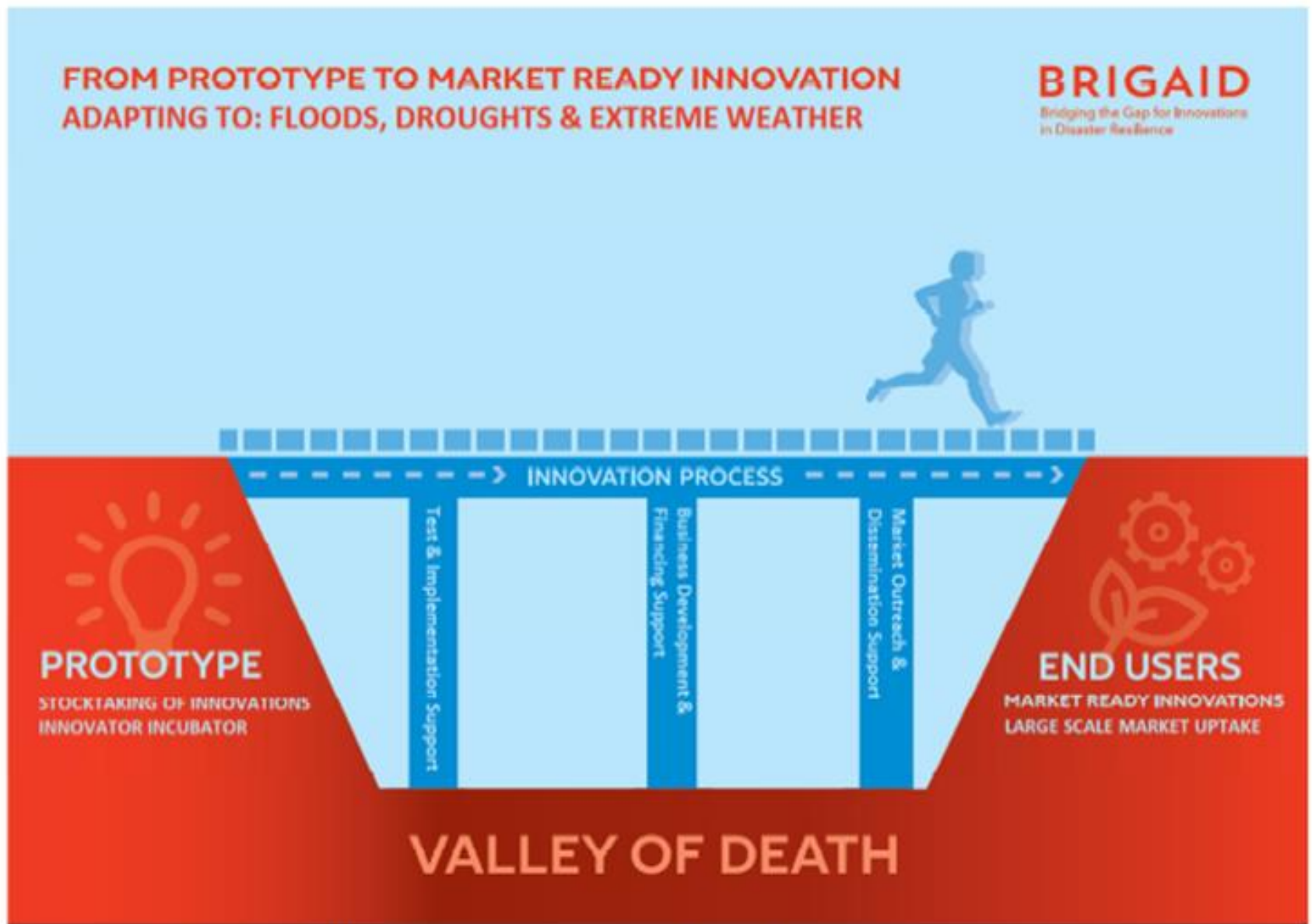


Figure 1.1: BRIGAIID's conceptual approach with three types support for innovations

Stakeholders Management Plan

Communication Plan & Strategy

1st Pillar Engaging local players (Researchers, Innovators, Financiers, Policy Makers)

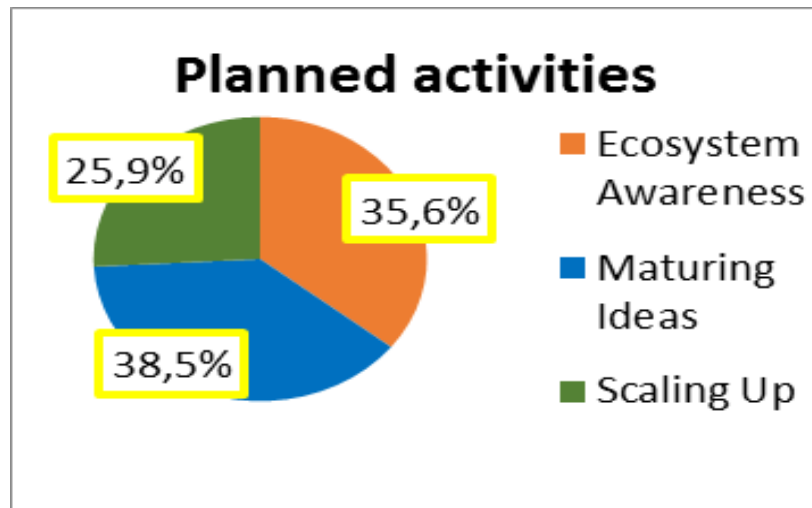
- Partnerships with universities and research institutions
- Mobilizing the local ecosystem of entrepreneurship towards CleanTech & innovative climate change solutions
- Partnerships with business accelerators, incubators and funds
- Stakeholder Advisory Board

2nd Pillar Cross-fertilisation and Regionalization & Internationalisation

- Knowledge exchange and sharing good practice with EIT community
- Linking existing EU projects of the consortium with Hub's activities
- Operating joint EIT Project and Pilots e.g. EIT RIS Joint Acceleration Programme or Climate Launchpad between Greece & Cyprus

Business Plan

4 Related Projects	20 Conferences	3 Competitions	6 Outreach act.
10 Acceleration act.	3 Fundraising act.	3 Training act.	5 Regional events



Year	Total Operational Budget	Total EIT Funding in €	Total Own Funding in €	Overall EIT Funding Rate (%)	Overall Own Funding Rate (%)
2018	109,300	48,690	60,610	44.5	55.5
2019	621,500	286,000	335,200	46.0	53.9
2020	785,200	308,840	481,360	39.3	61.3

Our Ongoing Projects



Letters of Support

